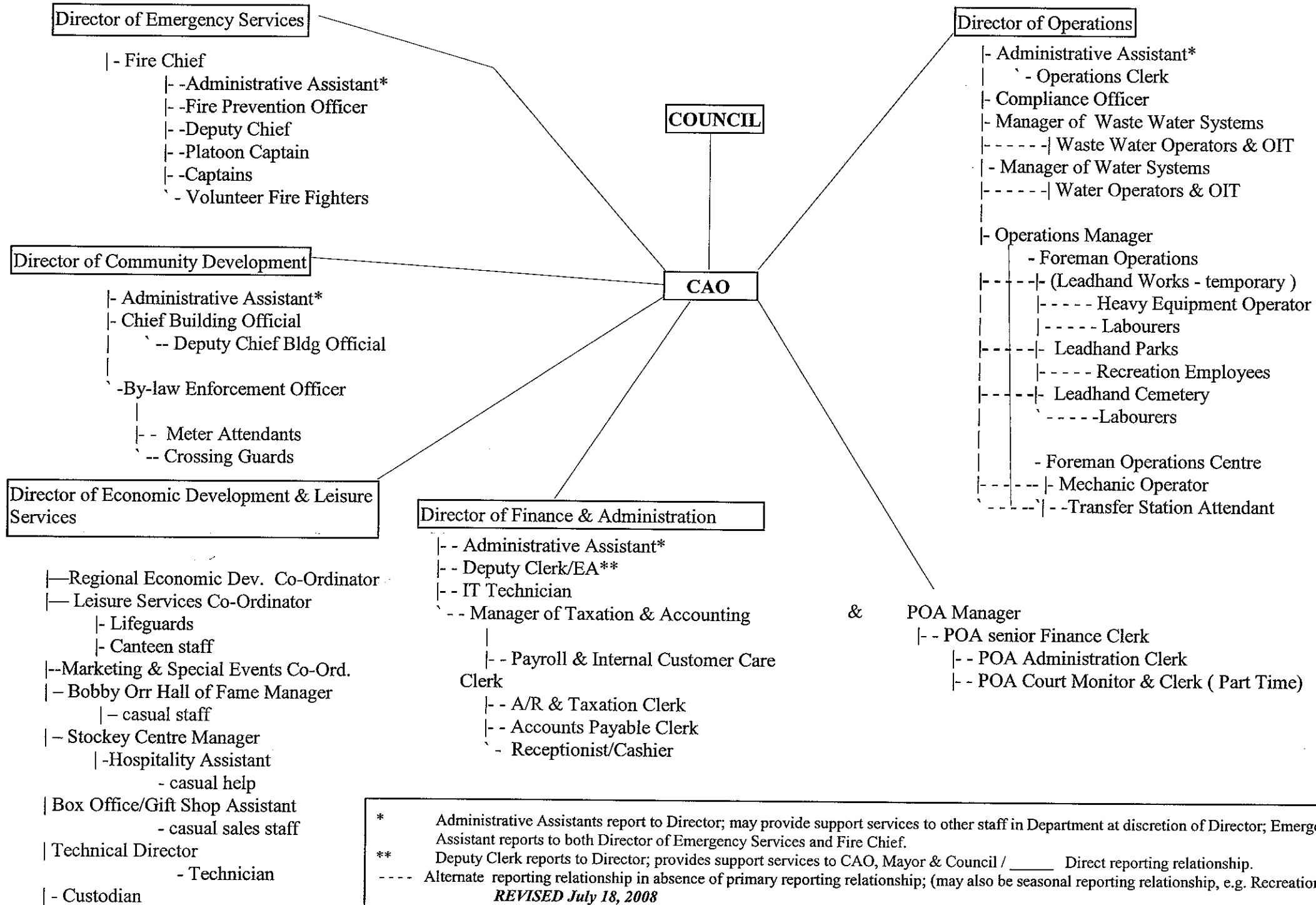


PERSONNEL ORGANIZATION CHART



* Administrative Assistants report to Director; may provide support services to other staff in Department at discretion of Director; Emergency Services Administrative Assistant reports to both Director of Emergency Services and Fire Chief.

** Deputy Clerk reports to Director; provides support services to CAO, Mayor & Council / _____ Direct reporting relationship.

----- Alternate reporting relationship in absence of primary reporting relationship; (may also be seasonal reporting relationship, e.g. Recreation Employees)

REVISED July 18, 2008